

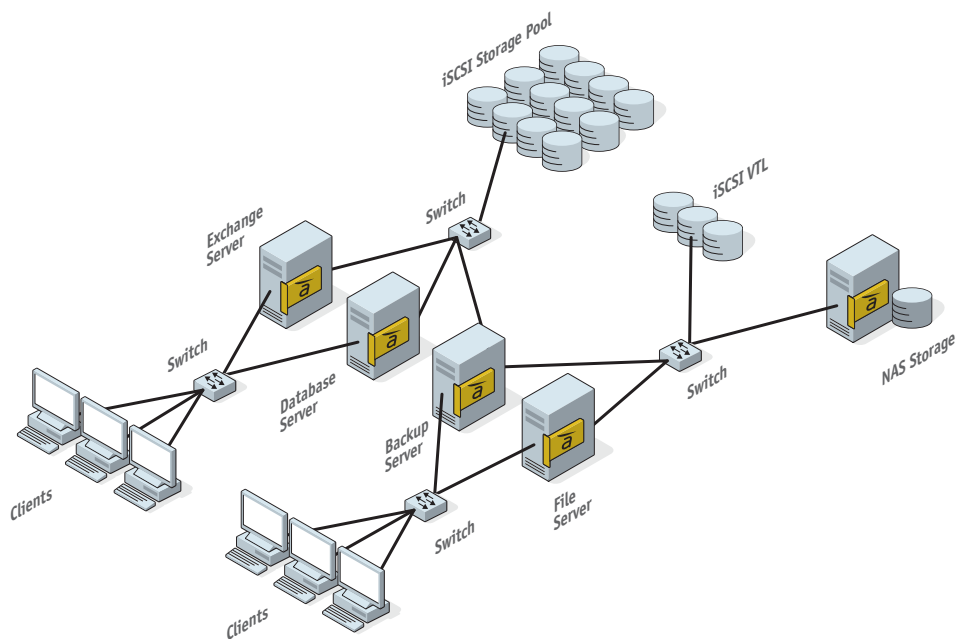
Alacritech® Scalable Network Accelerators™

The Complete Network Performance Solution

The Alacritech® TCP offload technology allows servers to scale in performance by relieving the host CPU of the burden of processing network traffic. Once the host processor is no longer bound by network-packet processing, it is free to do the tasks it was meant to do, such as processing applications. Customers benefit from the added performance that Alacritech technology provides in a number of ways, including supporting more users, adding more applications, or executing applications faster. This greatly enhances the server's usefulness, resulting in fewer servers being required and extending service life.

Alacritech Patented Technology Means Faster Data Delivery

Alacritech's fourth-generation Scalable Network Accelerator™ (SNA) leverages its patented technology to free up the CPU from network-packet processing. This technology includes a custom ASIC that has been specifically designed to move network data as fast and as efficiently as possible. By taking advantage of the additional advanced features of the Alacritech Accelerator, such as support for port aggregation** and Jumbo Frames, customers can move more data over existing networks than ever before.



Alacritech and Microsoft®: TCP Chimney

The Microsoft® Scalable Networking Pack takes advantage of Alacritech's patented TCP offload technology in the form of TCP Chimney to help optimize server performance by removing existing network bottlenecks. The combination of Microsoft® TCP Chimney and Alacritech SNAs drives the performance that today's high-speed networks demand.



Product Highlights

- Offers one, two, or four 10/100/1000Base-T copper or 1000Base-SX fiber ports
- Offloads TCP/IP processing from the host processor
- Transparently accelerates all TCP-based traffic, including email, web, file-serving, file transfer, backup, and iSCSI storage
- Delivers industry-standard Ethernet link aggregation** and failover
- Both PCI-X- and PCIe-based solutions
- Optimizes Microsoft Windows® servers and NAS applications
- Supports Windows® XP,* Windows Vista™,* Windows Server® 2003, and more
- Accelerates the Microsoft® iSCSI Software Initiator
- Supports PXE and iSCSI boot

Accelerator Benefits

- Accelerates server data delivery
- Improves server efficiency
- Improves total cost of ownership
- Extends the life of the server
- Reduces CPU utilization
- Decreases client response times
- Boosts network performance to full-wire speed
- Increases networked application performance, including backups
- Installs easily as a cost-effective server upgrade

*Available Summer 2007

** Exception: Port or link aggregation is not supported in the SEN1500 product series

The Alacritech Family of Scalable Network Accelerators

Fiber Optic Accelerators

Port Speeds	2000 Mbits/s Full Duplex
Connectors	Duplex LC (cable not included)
Media	1000Base-SX; Multimode Fiber
Operating Humidity	8% to 80%, non-condensing
Diagnostic LEDs	Link and network activity

Global Product Attributes

- Onboard Memory: 16 MB per port
- Operating Temperature: 0° to 55° C (minimum airflow: 150LFM)
- Standards Compliance: ANSI/IEEE Std. 802.3, 2000 Edition (1000Base-T, 100Base-TX, 10Base-T) FCC, CE, VCCI
- Limited Lifetime Warranty
- Package Contents: Card, manual, and CD with drivers

Model #	Ports	Power (typical)	Weight	Physical Size
SEN2001XF	1	2A@5V	Fiber Card: 2.9oz (82g); card, manual, CD, box: 8.0oz (227g)	PCI low-profile MD2 2.536" x 6.600"
SEN2002XF	2	2A@5V	Fiber Card: 3.4oz (96g); card, manual, CD, box: 8.5oz (241g)	PCI low-profile MD2 2.536" x 6.600"
SEN2102EF	2	1.2A@3.3V, 1.0A@12V	Fiber Card: 5.7oz (162g); card, manual, CD, box: 12.7oz (360g)	PCI 4.375" x 9.500"
SEN2104EF	4	1.2A@3.3V, 1.5A@12V	Fiber Card: 6.7oz (162g); card, manual, CD, box: 13.7oz (388g)	PCI 4.375" x 9.500"

Platforms	SEN2001XF, SEN2002XF, SEN2102EF, SEN2104EF - Windows® XP*, Windows Vista™*, Windows Server® 2003 Standard, Windows Server® 2003 Enterprise, Windows Server® 2003 Data Center
Bus Type(s)	SEN2001XF, SEN2002XF - 133 MHz/64bit bus master PCI-X 1.0a universal card; compatible with 32bit PCI 2.2; low-profile enabled; standard height PCI 2.2 bracket and low-profile bracket included SEN2102EF, SEN2104EF - x4 PCI Express 1.0a

Twisted Pair Copper Accelerators

Port Speeds	IEEE Auto Negotiation: 10/100/1000 Mbits/s
Connectors	RJ-45 (cable not included)
Media	1000Base-T, 100Base-TX; Cat 5 or better; 10Base-T; Cat 3 or better
Operating Humidity	5% to 85%, non-condensing
Diagnostic LEDs	Link status, speed, and network activity

Model #	Ports	Power (typical)	Weight	Physical Size
SEN1511XT* SEN1811XT SEN2001XT	1	3A@3.3V	Copper Card: 2.7oz (77g); card, manual, CD, box: 7.8oz (221g)	PCI low-profile MD2 2.536" x 6.600"
SEN1512XT*	2	3A@3.3V	Copper Card: 2.8oz (79g); card, manual, CD, box: 8.0oz (227g)	PCI low-profile MD2 2.536" x 6.600"
SEN1522ET*	2	1.5A@3.3V, 1A@12V	Copper Card: 3.1oz (88g); card, manual, CD, box: 8.2oz (232g)	PCI 4.375" x 9.500"
SEN1812XT SEN2002XT	2	3A@3.3V	Copper Card: 3.1oz (88g); card, manual, CD, box: 8.2oz (232g)	PCI low-profile MD2 2.536" x 6.600"
SEN1822ET SEN2102ET	2	1.5A@3.3V, 1A@12V	Copper Card: 5.4oz (153g); card, manual, CD, box: 12.4oz (352g)	PCI 4.375" x 9.500"
SEN2104ET	4	2A@3.3V, 1.5A@12V	Copper Card: 6.1oz (173g); card, manual, CD, box: 13.1oz (360g)	PCI 4.375" x 9.500"

Platforms	SEN1511XT, SEN1512XT, SEN1522ET - Windows® XP*, Windows Vista™* SEN1811XT, SEN1812XT, SEN1822ET - Windows® XP*, Windows Vista™*, Windows Server® 2003 Standard SEN2001XT, SEN2002XT, SEN2102EF, SEN2104EF - Windows® XP*, Windows Vista™*, Windows Server® 2003 Standard, Windows Server® 2003 Enterprise, Windows Server® 2003 Data Center
Bus Type(s)	SEN1511XT, SEN1512XT, SEN1811XT, SEN1812XT, SEN2001XF, SEN2002XF - 133 MHz/64bit bus master PCI-X 1.0a universal card; compatible with 32bit PCI 2.2; low-profile enabled; standard height PCI 2.2 bracket and low-profile bracket included SEN1522XT, SEN1822ET, SEN2102ET, SEN2104ET - x4 PCI Express 1.0a